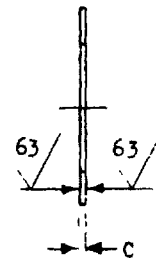
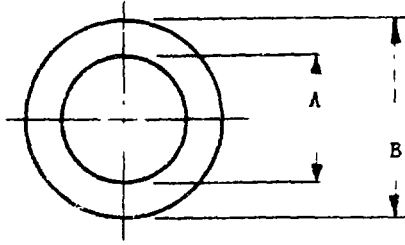


FED SUP CLASS
5310

MS9549(ASG)

Review activities:
USAF - 11
Navy - WF



PART NUMBER	NOMINAL SIZE	A +.010 -.005	B +.010	C	APPROX WEIGHT LB/100
MS9549-04	.099	.119	.250	.014 - .018	.02
MS9549-05	.112	.135	.312	.014 - .018	.03
MS9549-06	.125	.150	.312	.014 - .018	.03
MS9549-07	.138	.159	.375	.014 - .018	.04
MS9549-08	.164	.184	.375	.014 - .018	.04
MS9549-09	.190	.213	.438	.028 - .036	.11
MS9549-10	.250	.276	.500	.028 - .036	.13
MS9549-11	.312	.338	.562	.028 - .036	.15
MS9549-12	.375	.401	.625	.028 - .036	.17
MS9549-13	.438	.463	.750	.028 - .036	.25
MS9549-14	.500	.526	.812	.028 - .036	.27
MS9549-15	.562	.588	.938	.028 - .036	.39
MS9549-16	.625	.651	1.000	.028 - .036	.42
MS9549-17	.750	.776	1.188	.028 - .036	.60
MS-34-3	.875	.901	1.375	.028 - .036	.78
MS9549-19	1.000	1.026	1.562	.028 - .036	1.01

1. MATERIAL: CORROSION RESISTANT STEEL AMS 5510.
2. WASHER FACES SHALL BE FLAT WITHIN .003 AND PARALLEL WITHIN .002 FIR.
3. REMOVE BURRS AND SHARP EDGES.
4. SURFACE ROUGHNESS: AS 291.
5. DIAMETERS A AND B TO BE CONCENTRIC WITHIN .010 FIR.
6. DIMENSIONS IN INCHES.
7. IDENTIFICATION: MARK PART NUMBER AND MANUFACTURER'S IDENTIFICATION ON CONTAINER.
8. DO NOT USE UNASSIGNED PART NUMBERS.

SAE AMERICAN SOCIETY OF AUTOMOTIVE ENGINEERS, INC. PUBLICATIONS.
THIS STANDARD WAS DEVELOPED COOPERATIVELY WITH THE ENGINE & PROPELLER UTILITY PARTS COMMITTEE OF THE SAE.

USAF - 11	TITLE	MILITARY STANDARD
Other Cust Navy - WF	WASHER, FLAT - AMS 5510	MS9549(ASG)
PROCUREMENT SPECIFICATION NONE	SUPERSEDES:	SHEET 1 OF 1

APPROVED 19 Apr 65 REVISED

This order is best represented in Department of the Air Force (AF) and the Navy and is represented in the Navy and the Air Force (AF) and the Navy. All other military activities shall be displayed in the appropriate column.