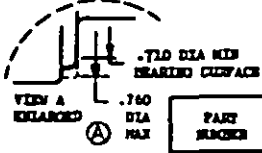
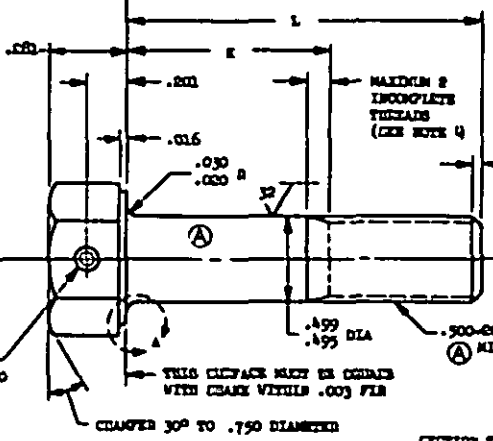
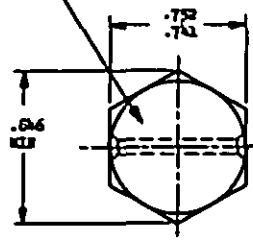


FED. SUP CLASS
5306

MS9505

MARK PART NUMBER AND MANUFACTURER IDENTIFICATION PER AS 478 CLASS A



.070 DIAMETER
GK 90° TO .100
DIA BOTH ENDS

CHAMFER 30° TO .750 DIAMETER

SECTION THROUGH THREAD PROFILE

Review activities: Army - MC, IC
Navy - 02, 05
User activities:

PART NUMBER	L	K	APPROX WEIGHT LB/100	PART NUMBER	L	K	APPROX WEIGHT LB/100
MS9505-04	.612	.105-.125	8.30	MS9505-31	3.250	1.590-2.000	21.03
MS9505-05	.675	.105-.125	8.65	MS9505-32	3.375	2.065-2.125	22.52
MS9505-06	.938	.105-.125	9.00	MS9505-33	3.500	2.150-2.250	23.22
MS9505-07	1.000	.105-.125	9.35	MS9505-34	3.625	2.315-2.375	23.91
MS9505-08	1.062	.105-.125	9.70	MS9505-35	3.750	2.440-2.500	24.60
MS9505-09	1.125	.105-.125	10.04	MS9505-36	3.875	2.565-2.625	25.30
MS9505-10	1.188	.105-.125	10.39	MS9505-37	4.000	2.690-2.750	25.99
MS9505-11	1.250	.105-.125	10.73	MS9505-38	4.125	2.815-2.875	26.68
MS9505-12	1.312	.105-.125	11.08	MS9505-39	4.250	2.940-3.000	27.38
MS9505-13	1.375	.105-.125	11.43	MS9505-40	4.375	3.065-3.125	28.08
MS9505-14	1.438	.150-.188	11.78	MS9505-41	4.500	3.190-3.250	28.77
MS9505-15	1.500	.150-.250	12.12	MS9505-42	4.625	3.315-3.375	29.46
MS9505-16	1.562	.250-.312	12.46	MS9505-43	4.750	3.440-3.500	30.15
MS9505-17	1.625	.312-.375	12.81	MS9505-44	4.875	3.565-3.625	30.84
MS9505-18	1.688	.375-.438	13.16	MS9505-45	5.000	3.690-3.750	31.54
MS9505-19	1.750	.438-.500	13.51	MS9505-46	5.125	3.815-3.875	32.23
MS9505-20	1.812	.500-.625	13.85	MS9505-47	5.250	3.940-4.000	32.92
MS9505-21	2.000	.625-.750	14.89	MS9505-48	5.375	4.065-4.125	33.62
MS9505-22	2.125	.750-.875	15.59	MS9505-49	5.500	4.190-4.250	34.31
MS9505-23	2.250	.875-1.000	16.28	MS9505-50	5.625	4.315-4.375	35.01
MS9505-24	2.375	1.062-1.125	16.97	MS9505-51	5.750	4.440-4.500	35.70
MS9505-25	2.500	1.150-1.250	17.67	MS9505-52	5.875	4.565-4.625	36.39
MS9505-26	2.625	1.312-1.375	18.36	MS9505-53	6.000	4.690-4.750	37.09
MS9505-27	2.750	1.440-1.500	19.05	MS9505-34	1.612	.502-.562	13.85
MS9505-28	2.875	1.565-1.625	19.73	MS9505-35	1.938	.628-.688	14.35
MS9505-29	3.000	1.690-1.750	20.42				
MS9505-30	3.125	1.815-1.875	21.11				

- CRACK CHALL IS STRAIGHT WITHIN .002 TOTAL PER INCH OF BOLT LENGTH
- THE CONCENTRICITY OF THREAD PD IN RELATION TO THE CRACK CHALL BE WITHIN .006 PER.
- THE CONCENTRICITY OF THE CRACK IN RELATION TO THE MAJOR FACE DIAMETER AND HEXAGON CHALL BE WITHIN .023 PER.
- INCOMPLETE THREADS NOT TO EXCEED FIFTEEN.
- MATERIAL: OXIDE AND LEAD RESISTANT STEEL AND 5131.
- MANUFACTURING SPECIFICATIONS: AND 7077.
- FLUORESCENT PENETRANT INSPECTED PER AMS 625.
- SURFACE TEXTURE: GRAB 94.1-1962 UNLESS OTHERWISE SPECIFIED SURFACES TO IS 125 MICROINCHES EXCEPT HEXAGON
- BREAK CRACK EDGES: .003-.015 UNLESS OTHERWISE SPECIFIED.
- DIMENSIONS IN INCHES, UNLESS OTHERWISE SPECIFIED, TOLERANCES: LINEAR DIMENSIONS ± .010, ANGULAR DIMENSIONS ± 1°.
- DO NOT USE UNMACHINED PART NUMBER.

AS & AMS ARE SOCIETY OF AUTOMOTIVE ENGINEERS, INC. PUBLICATIONS.
THIS STANDARD WAS DEVELOPED COOPERATIVELY WITH THE MILITARY SERVICES BY THE GAS AEROSPACE PART STANDARDS DIVISION

This activity standard is approved by the Department of Defense and is mandatory on all activities. All activities for all new engineering and design specifications and for operations shall be made from this document.

P Order Code Army - 14 Navy - 15	INTERNATIONAL TITLE INTEREST	MILITARY STANDARD MS9505
	ASSC AIR STD 1777	
PROCUREMENT SPECIFICATION SUPERSEDES: NONE		SHEET 1 OF 1

DD FORM 672-1 (Coordinate)

PREVIOUS EDITIONS OF THIS FORM ARE OBSOLETE

APPROVED 5 MAY 1965 REVISED 17 MAY 69