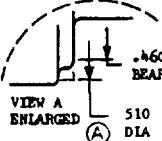
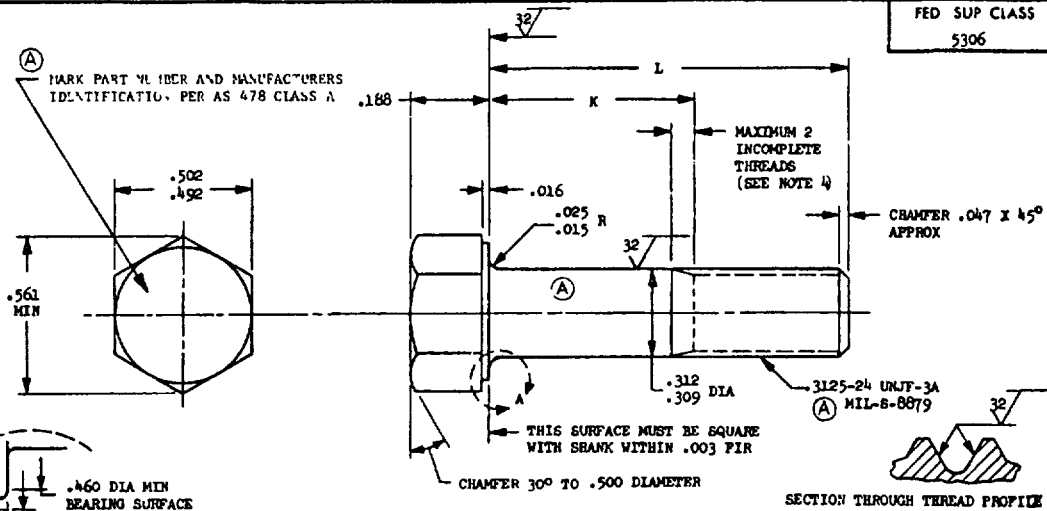


# MS9491

FED SUP CLASS  
5306



PART NUMBER	L	K	APPROX WEIGHT LB/100	PART NUMBER	L	K	APPROX WEIGHT LB/100
MS9491-04	.500	.088-.108	2.18	MS9491-31	2.625	1.690-1.750	6.78
MS9491-05	.562	.088-.108	2.32	MS9491-32	2.750	1.815-1.875	7.06
MS9491-06	.625	.088-.108	2.45	MS9491-33	2.875	1.940-2.000	7.33
MS9491-07	.688	.088-.108	2.59	MS9491-34	3.000	2.065-2.125	7.60
MS9491-08	.750	.088-.108	2.73	MS9491-35	3.125	2.190-2.250	7.87
MS9491-09	.812	.088-.108	2.86	MS9491-36	3.250	2.315-2.375	8.14
MS9491-10	.875	.088-.108	3.00	MS9491-37	3.375	2.440-2.500	8.41
MS9491-11	.938	.088-.108	3.13	MS9491-38	3.500	2.565-2.625	8.68
MS9491-12	1.000	.088-.125	3.27	MS9491-39	3.625	2.690-2.750	8.95
MS9491-13	1.062	.128-.188	3.40	MS9491-40	3.750	2.815-2.875	9.22
MS9491-14	1.125	.190-.250	3.54	MS9491-41	3.875	2.940-3.000	9.49
MS9491-15	1.188	.252-.312	3.67	MS9491-42	4.000	3.065-3.125	9.76
MS9491-16	1.250	.315-.375	3.81	MS9491-43	4.125	3.190-3.250	10.03
MS9491-17	1.312	.378-.438	3.94	MS9491-44	4.250	3.315-3.375	10.30
MS9491-18	1.375	.440-.500	4.08	MS9491-45	4.375	3.440-3.500	10.57
MS9491-19	1.438	.502-.562	4.21	MS9491-46	4.500	3.565-3.625	10.84
MS9491-20	1.500	.565-.625	4.35	MS9491-47	4.625	3.690-3.750	11.11
MS9491-21	1.562	.628-.688	4.48	MS9491-48	4.750	3.815-3.875	11.39
MS9491-22	1.625	.690-.750	4.62	MS9491-49	4.875	3.940-4.000	11.66
MS9491-23	1.688	.752-.812	4.76	MS9491-50	5.000	4.065-4.125	11.93
MS9491-24	1.750	.815-.875	4.89	MS9491-51	5.125	4.190-4.250	12.20
MS9491-25	1.875	.940-1.000	5.16	MS9491-52	5.250	4.315-4.375	12.47
MS9491-26	2.000	1.065-1.125	5.43	MS9491-53	5.375	4.440-4.500	12.74
MS9491-27	2.125	1.190-1.250	5.70	MS9491-54	5.500	4.565-4.625	13.01
MS9491-28	2.250	1.315-1.375	5.97	MS9491-55	5.625	4.690-4.750	13.28
MS9491-29	2.375	1.440-1.500	6.24	MS9491-56	5.750	4.815-4.875	13.55
MS9491-30	2.500	1.565-1.625	6.51	MS9491-57	5.875	4.940-5.000	13.82
				MS9491-58	6.000	5.065-5.125	14.09
				MS9491-59	1 8.2	878 - 938	5 03
				MS9491-60	1 938	1 002-1 062	5 30

1. SHANK SHALL BE STRAIGHT WITHIN .003 TOTAL PER INCH OF BOLT LENGTH
2. THE CONCENTRICITY OF THREAD PD IN RELATION TO THE SHANK SHALL BE WITHIN .006 FIR
3. THE CONCENTRICITY OF THE SHANK IN RELATION TO THE WASHER FACE DIAMETER AND HEXAGON SHALL BE WITHIN .015 FIR.
4. INCOMPLETE THREADS NOT TO ENTER FILLET
5. MATERIAL CORROSION AND HEAT RESISTANT STEEL AMS 5731
6. MANUFACTURING SPECIFICATION AMS 7477.
7. FLUORESCENT PENETRANT INSPECTION PER AMS 2645.
8. SURFACE TEXTURE USAS B46 1-1962 UNLESS OTHERWISE SPECIFIED SURFACES TO BE 125 MICROINCHES EXCEPT HEXAGON
9. BREAK SHARP EDGES .003-.015 UNLESS OTHERWISE SPECIFIED
10. DIMENSIONS IN INCHES. UNLESS OTHERWISE SPECIFIED, TOLERANCES LINEAR DIMENSIONS ± .010, ANGULAR DIMENSIONS ± 5°.
11. DO NOT USE UNASSIGNED PART NUMBERS.

AS & AMS ARE SOCIETY OF AUTOMOTIVE ENGINEERS, INC. PUBLICATIONS.  
THIS STANDARD WAS DEVELOPED COOPERATIVELY WITH THE MILITARY SERVICES BY THE SAE AEROSPACE PART STANDARDS DIVISION

This military standard is approved by the Department of Defense and is mandatory on all activities. Selection for all new engineering and design applications and for repetitive use shall be made from this document.

APPROVED 5 May 1965  
REVISED 17 Nov 69

P USAF - 11 Other Cust Army - AV Navy - AS	INTERNATIONAL IDENTIFICATION ASSOC AIR IND 17/2	TITLE BOLT, MACHINE - HEXAGON HEAD FULL SHANK, AMS 5731, 3125-24 UNJF-3A	<b>MILITARY STANDARD</b>	
			<b>MS9491</b>	
PROCUREMENT SPECIFICATION NONE	SUPERSEDES		SHEET	1 OF 1

DD FORM 672-1 (Coordinated)

PREVIOUS EDITIONS OF THIS FORM ARE OBSOLETE