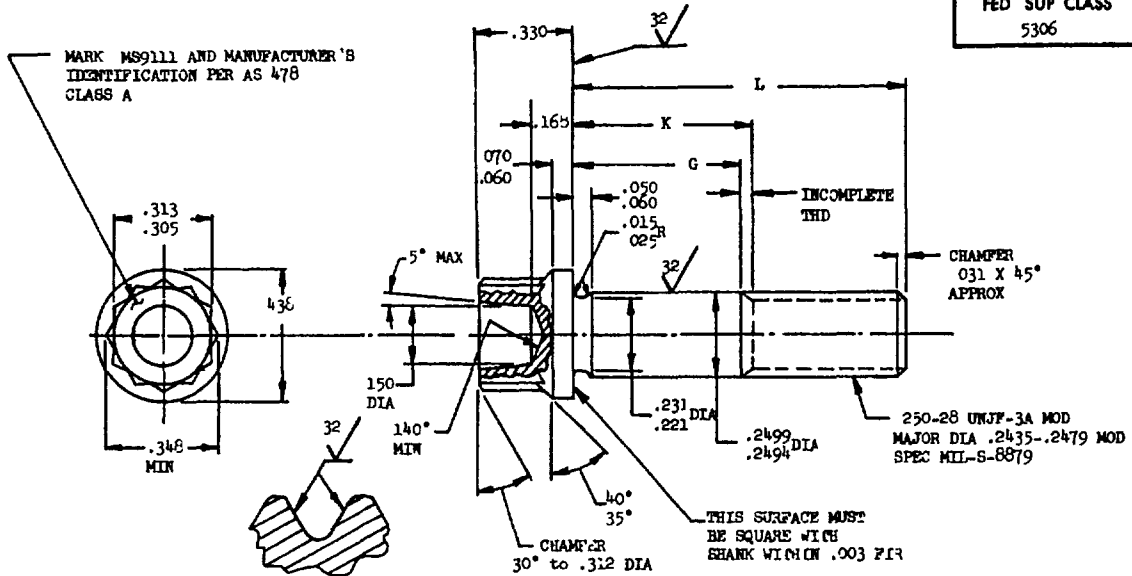


NOTICE—When Government drawings, specifications, or other data are used for any purpose other than in connection with a definitely related Government procurement operation, the United States Government therefor incurs no responsibility, nor any obligation whatsoever, and the fact that the Government may have formulated, furnished, or in any way supplied the said drawings, specifications, or other data is not to be regarded by implication or otherwise as in any manner licensing the holder or any other person or corporation, or conveying any rights or permission to manufacture, use, or sell any patented invention that may in any way be related thereto.

This standard is approved by the Department of the Air Force (11) and the Department of the Navy and is mandatory for use by all military activities which employ this standard where suitable.

MS9111 (ASG)

FED SUP CLASS
5306



SECTION THRU THREAD PROFILE

PART NO.	G GRIP	L LENGTH	K MAX	APPROX WGT. LB/100	PART NO.	G GRIP	L LENGTH	K MAX	APPROX WGT. LB/100
MS9111-01	.125	.562	.206	1.51	MS9111-16	.875	1.500	.956	2.78
MS9111-02	.125	.525	.206	1.58	MS9111-17	.938	1.562	1.019	2.87
MS9111-03	.125	.688	.206	1.66	MS9111-18	1.000	1.625	1.081	2.96
MS9111-04	.125	.750	.206	1.73	MS9111-19	1.125	1.750	1.206	3.13
MS9111-05	.158	.812	.269	1.82	MS9111-20	1.250	1.875	1.331	3.31
MS9111-06	.250	.875	.331	1.90	MS9111-21	1.375	2.000	1.456	3.46
MS9111-07	.312	.938	.393	1.99	MS9111-22	1.500	2.125	1.581	3.66
MS9111-08	.375	1.000	.455	2.08	MS9111-23	1.625	2.250	1.706	3.84
MS9111-09	.438	1.062	.519	2.17	MS9111-24	1.750	2.375	1.831	4.01
MS9111-10	.500	1.125	.581	2.26	MS9111-25	1.875	2.500	1.956	4.19
MS9111-11	.562	1.188	.643	2.34	MS9111-26	2.000	2.625	2.081	4.36
MS9111-12	.625	1.250	.706	2.43	MS9111-27	2.125	2.750	2.206	4.54
MS9111-13	.688	1.312	.769	2.52	MS9111-28	2.250	2.875	2.331	4.71
MS9111-14	.750	1.375	.831	2.61	MS9111-29	2.375	3.000	2.456	4.89
MS9111-15	.812	1.438	.893	2.69					

- SHANK SHALL BE STRAIGHT WITHIN .0015 F12 PER INCH OF BOLT LENGTH.
- SHANK SHALL BE CONCENTRIC WITH THREAD PD WITHIN .006 F12, WITH THREAD MAJOR DIAMETER WITHIN .001 F12, AND WITH WASHER FACE DIAMETER AND DOUBLE HEXAGON WITHIN .013 F12.
- MATERIAL CORROSION AND HEAT RESISTANT STEEL AMS 5731
- MANUFACTURING SPECIFICATION AMS 7477
- SURFACE ROUGHNESS AS 291, UNLESS OTHERWISE SPECIFIED, SURFACES TO BE 125 MICROINCHES.
- PART SUBJECT TO FLUORESCENT PENETRANT INSPECTION PER AMS 2645.
- BREAK SHARP EDGES .003 - .015 UNLESS OTHERWISE SPECIFIED.
- DIMENSION IN INCHES. UNLESS OTHERWISE SPECIFIED, TOLERANCES LINEAR DIMENSIONS ±.010, ANGULAR DIMENSIONS ±5°.
- DO NOT USE UNASSIGNED PART NUMBERS

AS & AMS ARE SOCIETY OF AUTOMOTIVE ENGINEERS, INC. PUBLICATIONS
THIS STANDARD WAS DEVELOPED COOPERATIVELY WITH THE ENGINE AND PROPELLER UTILITY PARTS COMMITTEE OF THE SAE

P.A	USAF - 11	TITLE
Other Cust	Navy - WP	
PROCUREMENT SPECIFICATION	SUPERSEDES:	

BOLT, MACHINE - DOUBLE HEXAGON EXTENDED WASHER HEAD, CLOSE TOLERANCE SHANK, AMS 5731, .250-28 UNJF-3A

MILITARY STANDARD
MS9111 (ASG)
SHEET 1 OF 1

REVISED
APPROVED 11 JAN 65